



RENIECYT #1946: 2002

## HISTORY



Asesoría y Diseño Mecánico (ADM) was established 33 years ago in Saltillo, Coahuila, México as a mechanical design consulting company.

Shortly after its inception, ADM quickly emerged as a leading market provider of top-tier equipment and manufacturing process devices for Original Equipment Manufacturer (OEM) in México.

In 1994, ADM entered a joint venture with Air Gage Co, an American firm specialized in designing and building fixture gages for dimensional control, particularly various types of gages such as in-line, off-line, and manual. This partnership concluded in 2001 following the sale of Air Gage Co.

Starting in 1995, ADM expanded its expertise to include the development of automation solutions and mechanical devices aimed at enhancing product transformation processes, handling systems and inspection protocols.

Currently, ADM employs over 90 individuals, including technicians, engineers and administrative staff.

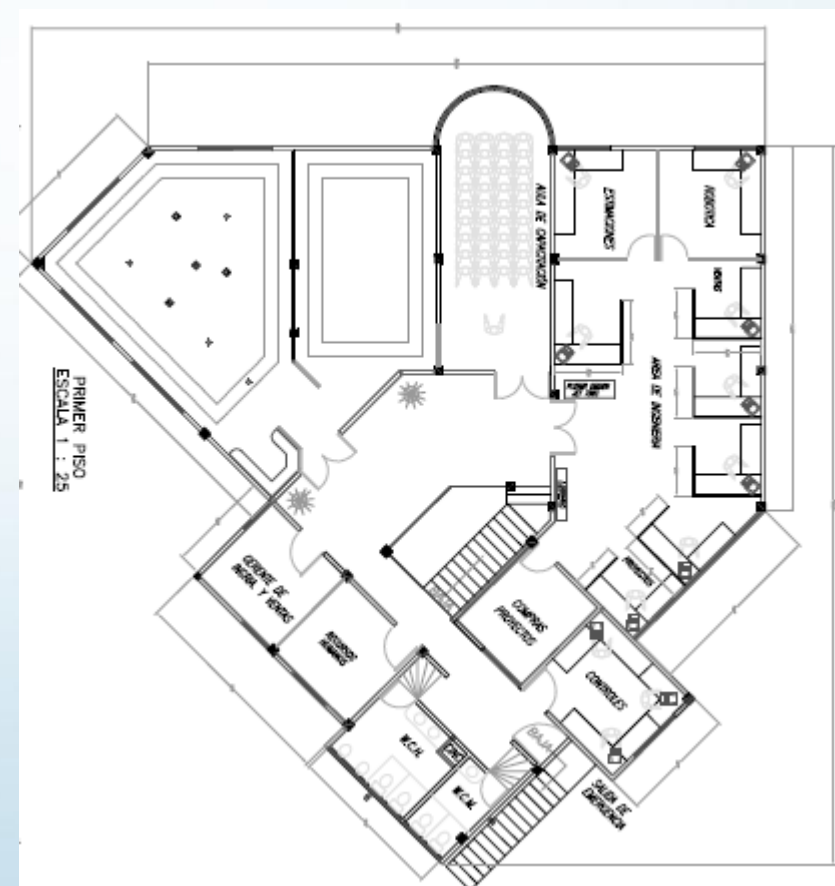
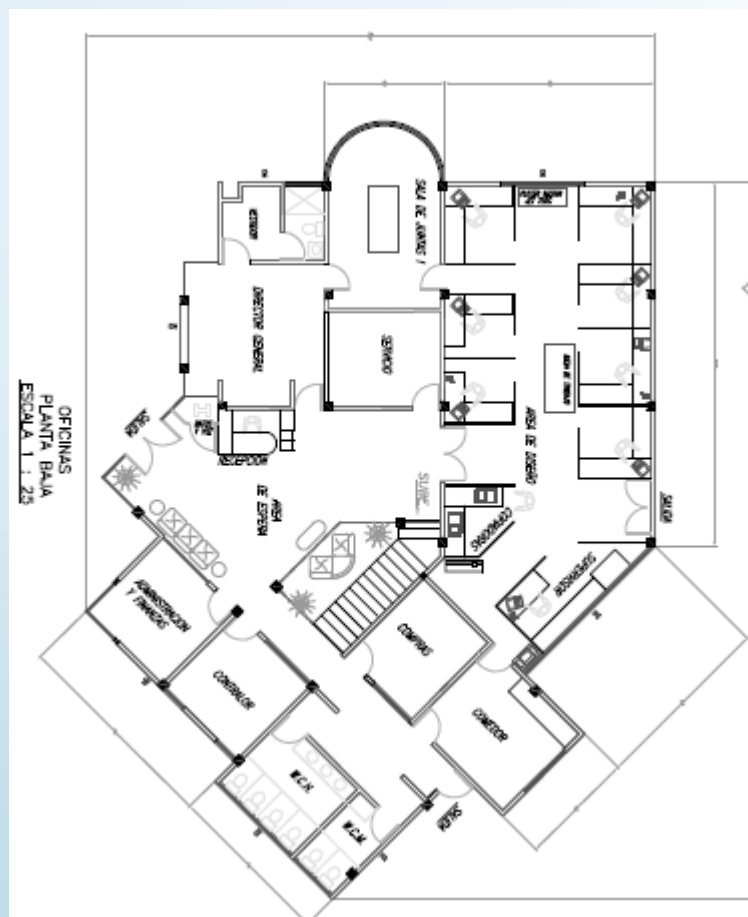
## FACILITIES

The Administrative building has 932 square meters in 2 levels, it has the sales, projects, purchase, administration and finance departments, the meeting room, training room, design department and directive office.



# FACILITIES

Brief distribution of the Administrative Building:



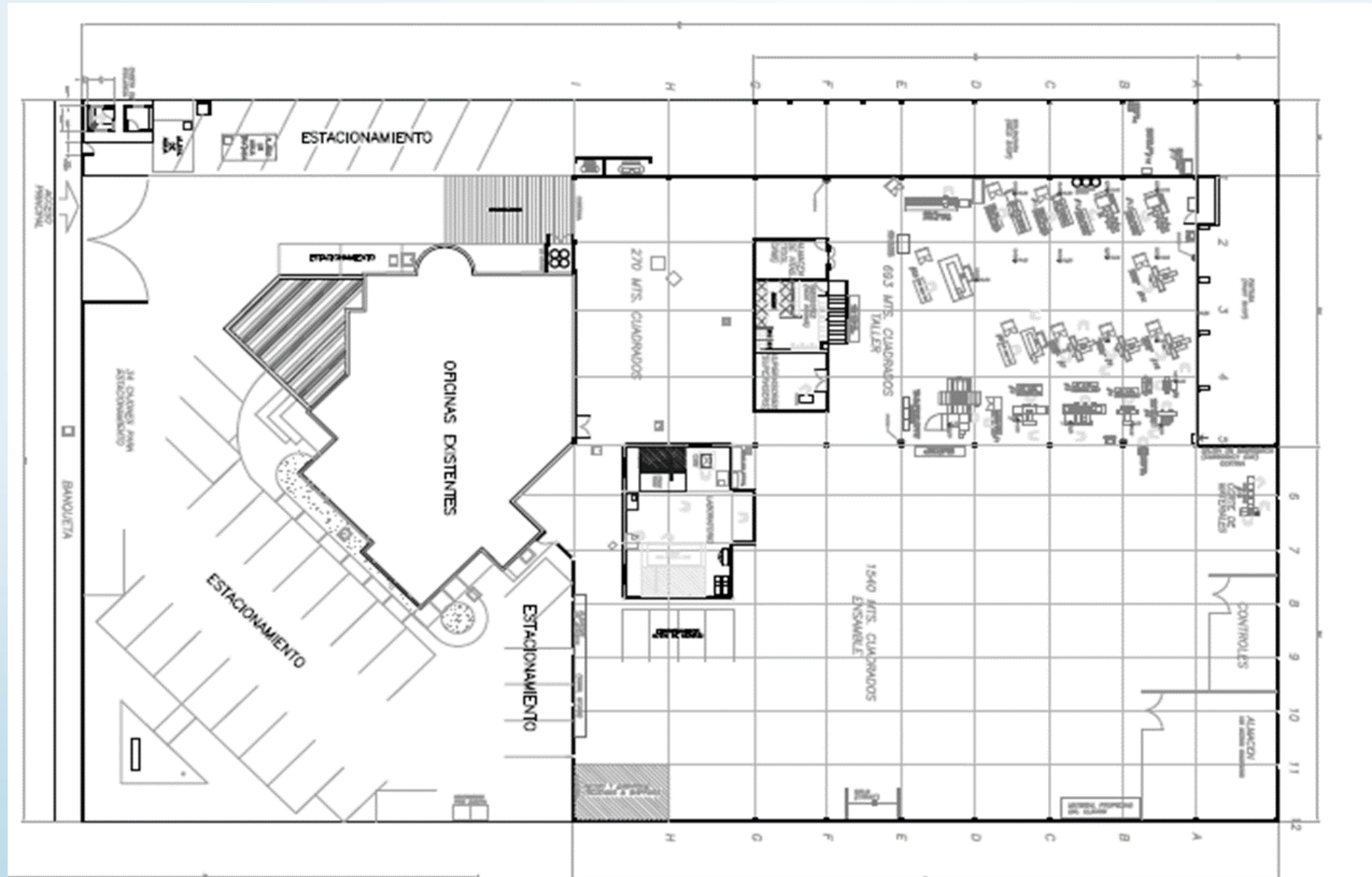
## FACILITIES

In the industrial warehouse there is a 2,650 square meters area, for machining workshop , welding workshop, production and control offices, assembly area and a metrology laboratory of 100 m2.



# FACILITIES

Industrial warehouse plant:



## FACILITIES



In the design department we count with 2D and 3D CAD Softwares, AutoCAD, Solidworks and CREO. Also we have MasterCAM, to complex machining components.

In the programming and control department, we work with Allen Bradley, Mitsubishi and Siemens controls. And in robotics, ABB and Fanuc. In electronic gages we work with GageXpress.

In the metrology laboratory we have with two CMM machines, one with PCdemis software and the other one with Virtualdemis.

The construction of the laboratory was following the norm of the CENAM (National Metrology Center), with passive foundation and temperature control system with full chamber.

In the machining workshop we have: lathe machines, milling machines, grinder, flat grinding machine, cylindrical grinding machines, saw band machines, welding machines, milling CNC and boring machine.

**FANUC**

*Mastercam*



pc·dmis

**ABB**

**SolidWorks**



creo®

**AutoCAD**

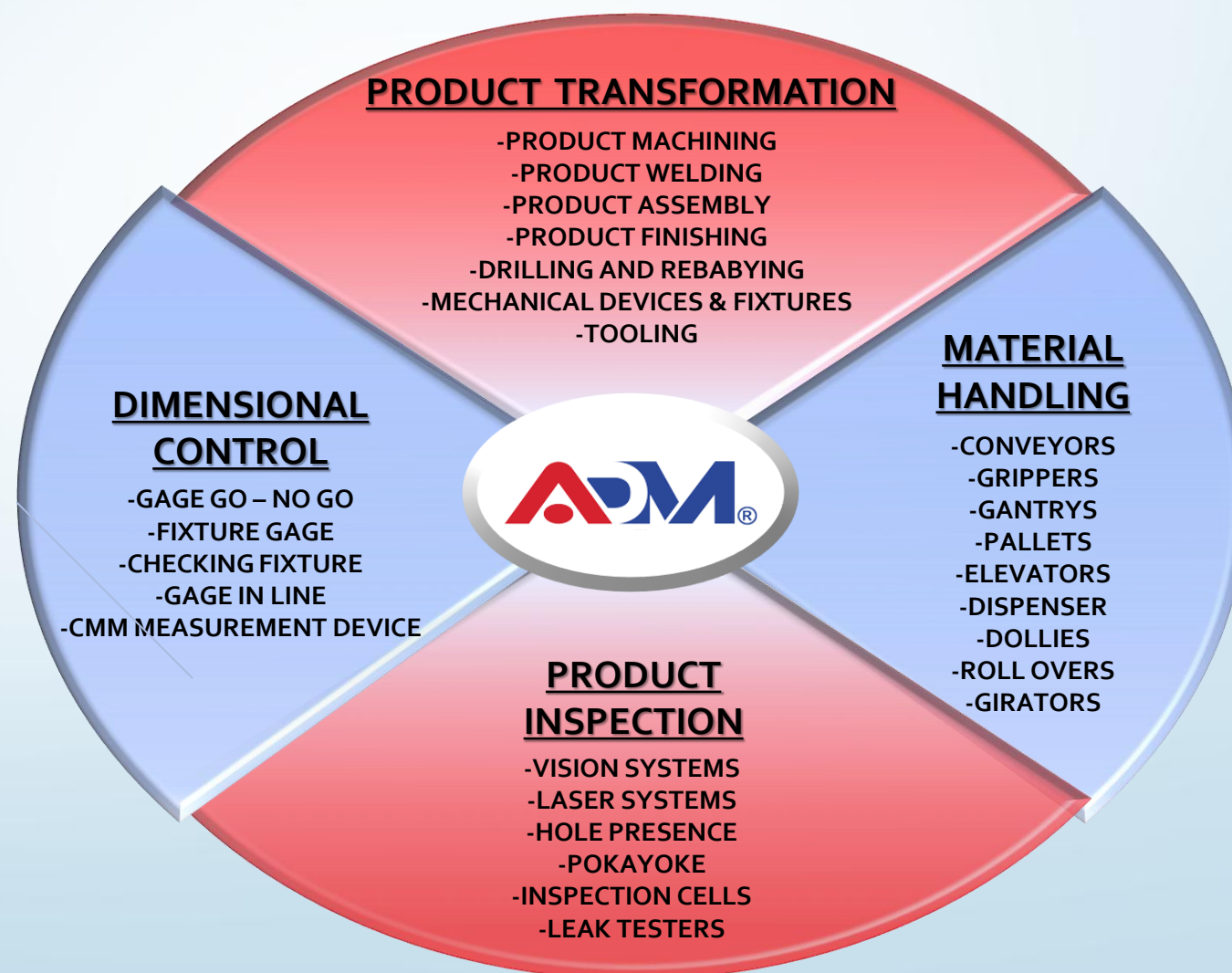
**SIEMENS**

# MANUFACTURING PROCESSES

We offer different solutions, we can sub divide it in 4 general processes:

We offer this solutions with different technologies:

- MANUAL**
- SEMIAUTOMATIC**
- AUTOMATIC**
- ROBOTIC**





# Examples



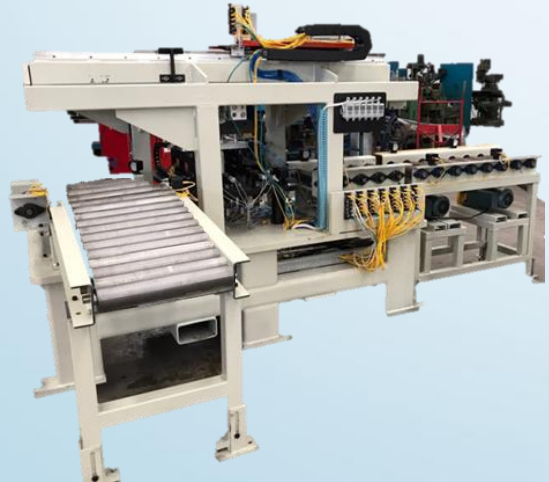
Assembly Cell



Robotic Palletizer



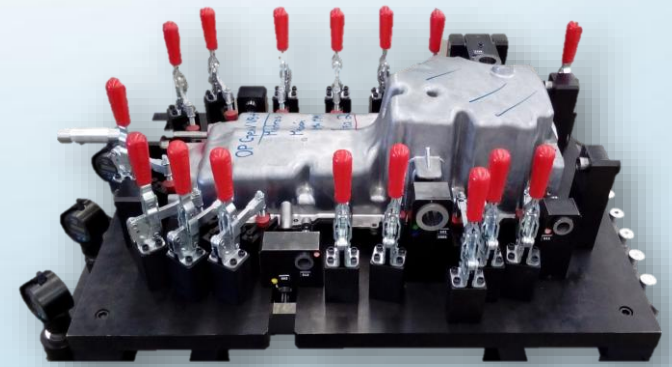
Vision System



Automatic Gage In Line



Manual Gage with Dial Indicators

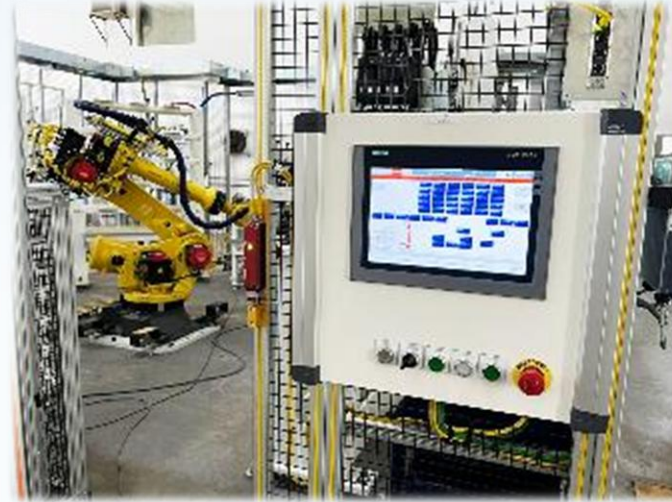


Manual Fixture Gage

# Examples



Assembly Line manual operations



Torque plate to block assembly cell



Automatic assembly stations



Test Stations

## METROLOGY LABORATORY

### We count with two CMM machines:

#### ➤ DEA PRIMA C<sub>1</sub> CMM

Dimensional Capacity:

Axis "X" 4000 mm

Axis "Y" 1600 mm

Axis "Z" 2100 mm





## ➤ CMM Poli Sky Star

Dimensional Capacity:

Axis "X" 1000 mm

Axis "Y" 750 mm

Axis "Z" 750 mm

We offer product measurement service.

## ALLIANCES

- Safran Engineering Services
- Digital Transducers
- Gage & Tooling of Precision
- Gaging Software include "SPC"

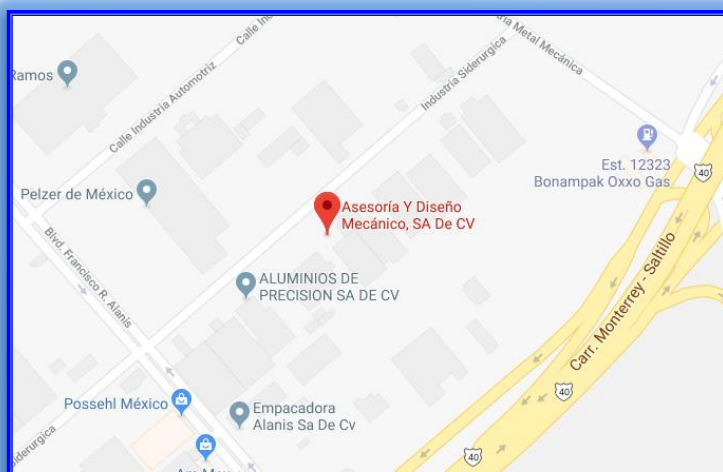


CLIENTS





## CONTACT US



**Industria Siderúrgica # 2035  
Parque Industrial  
Ramos Arizpe, Coahuila.  
México CP 25900  
Phone: (844) 488 32 77**

[angel.quero@adm.com.mx](mailto:angel.quero@adm.com.mx)

[hsaucedo@adm.com.mx](mailto:hsaucedo@adm.com.mx)

[alejandro.solorzano@adm.com.mx](mailto:alejandro.solorzano@adm.com.mx)

[contactos@adm.com.mx](mailto:contactos@adm.com.mx)



[www.adm.com.mx](http://www.adm.com.mx)